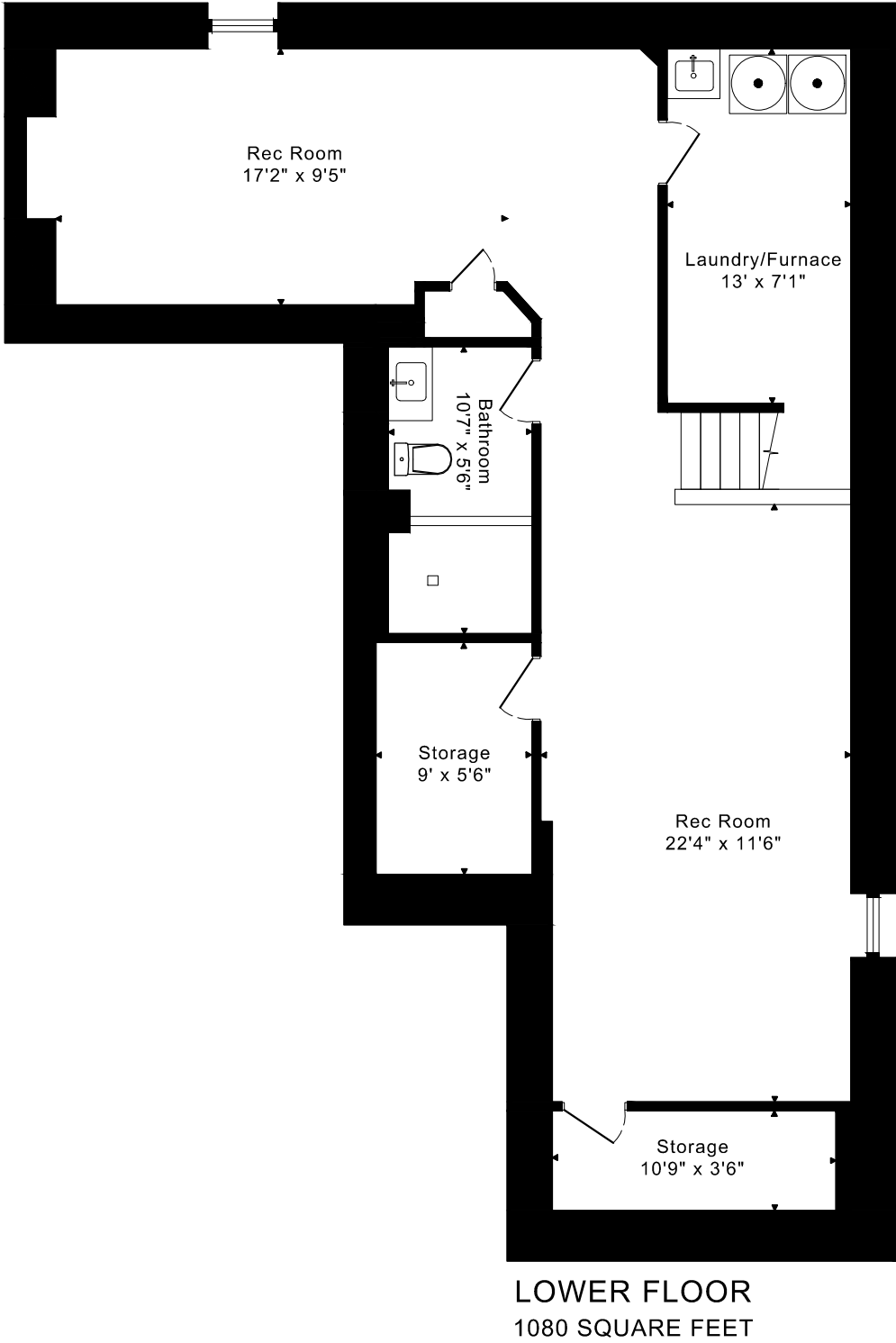
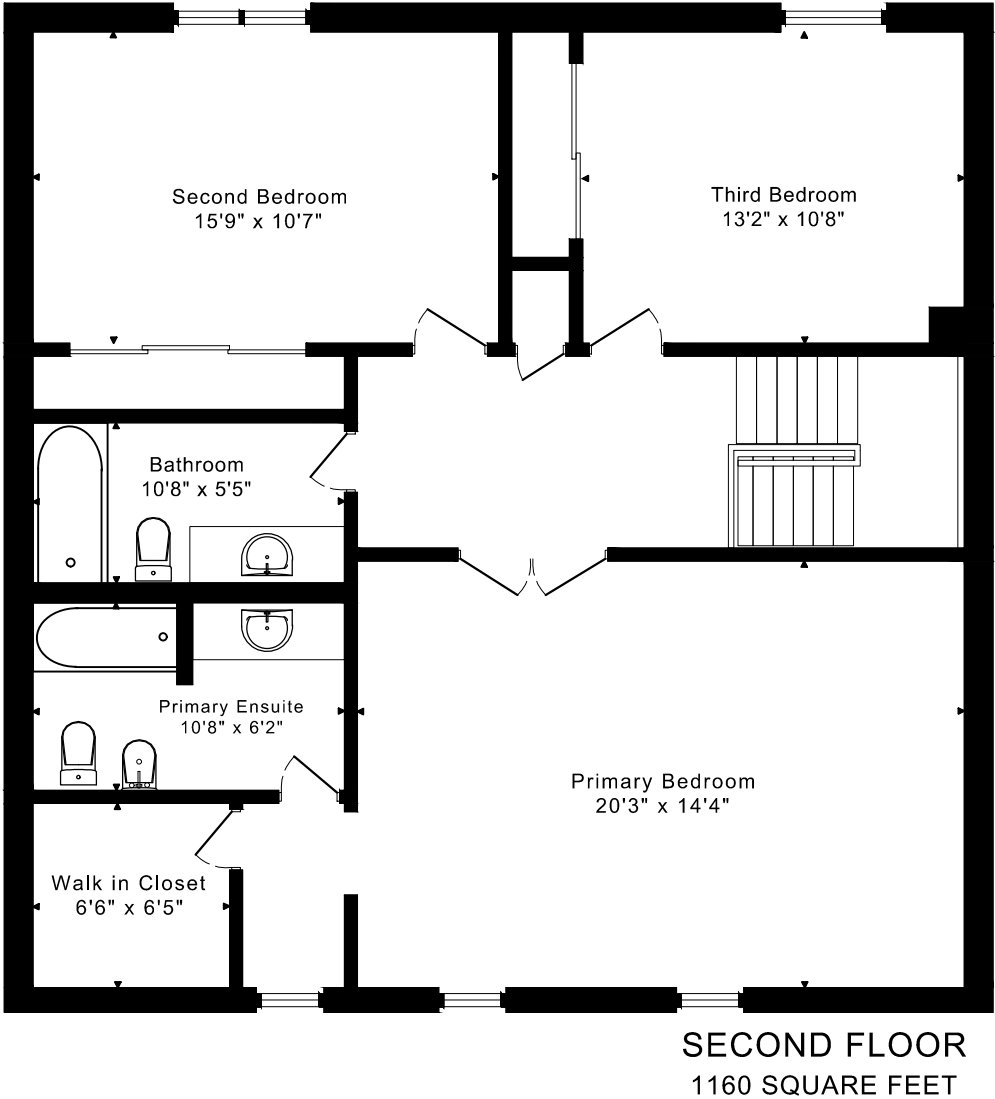
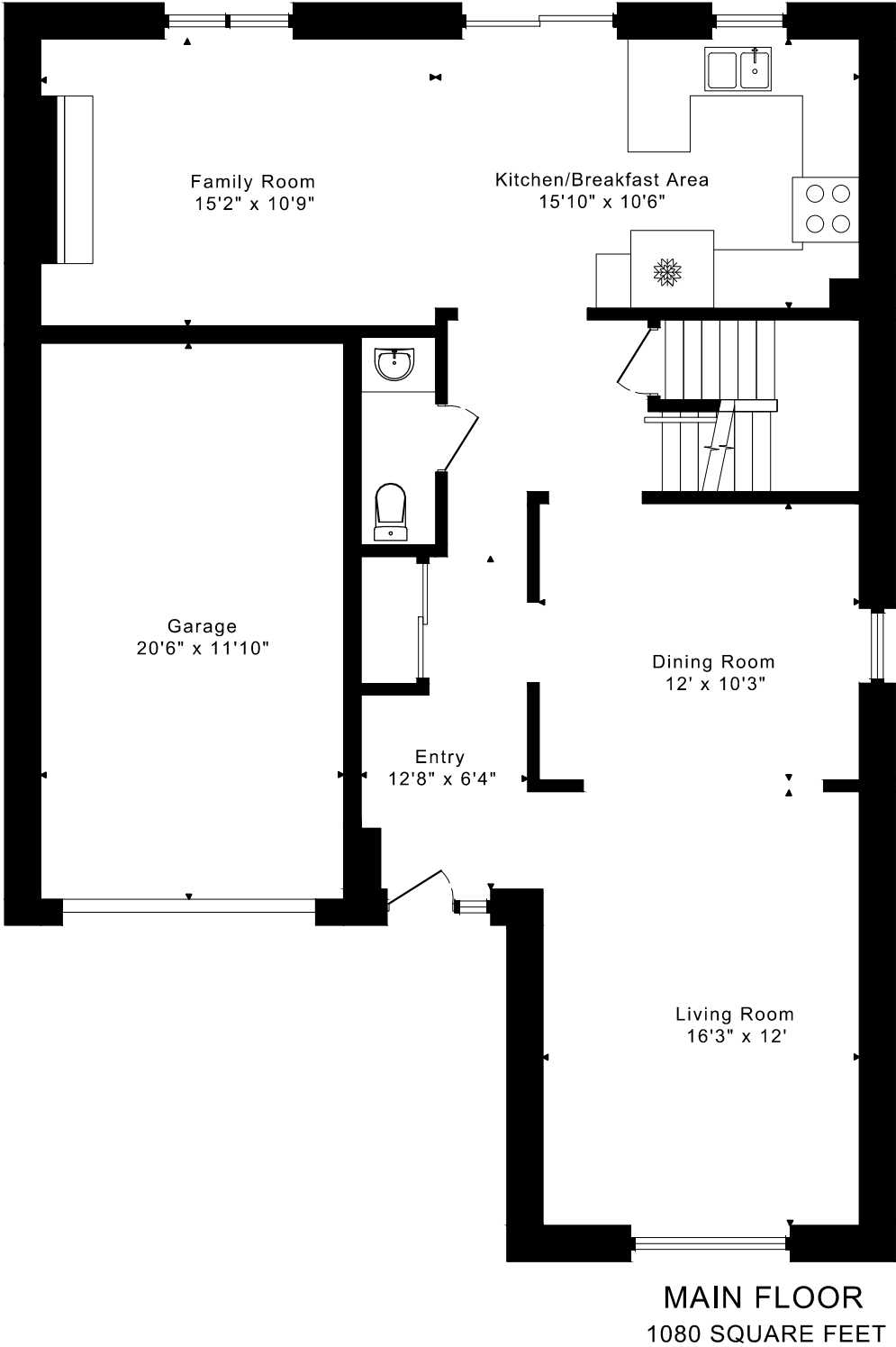


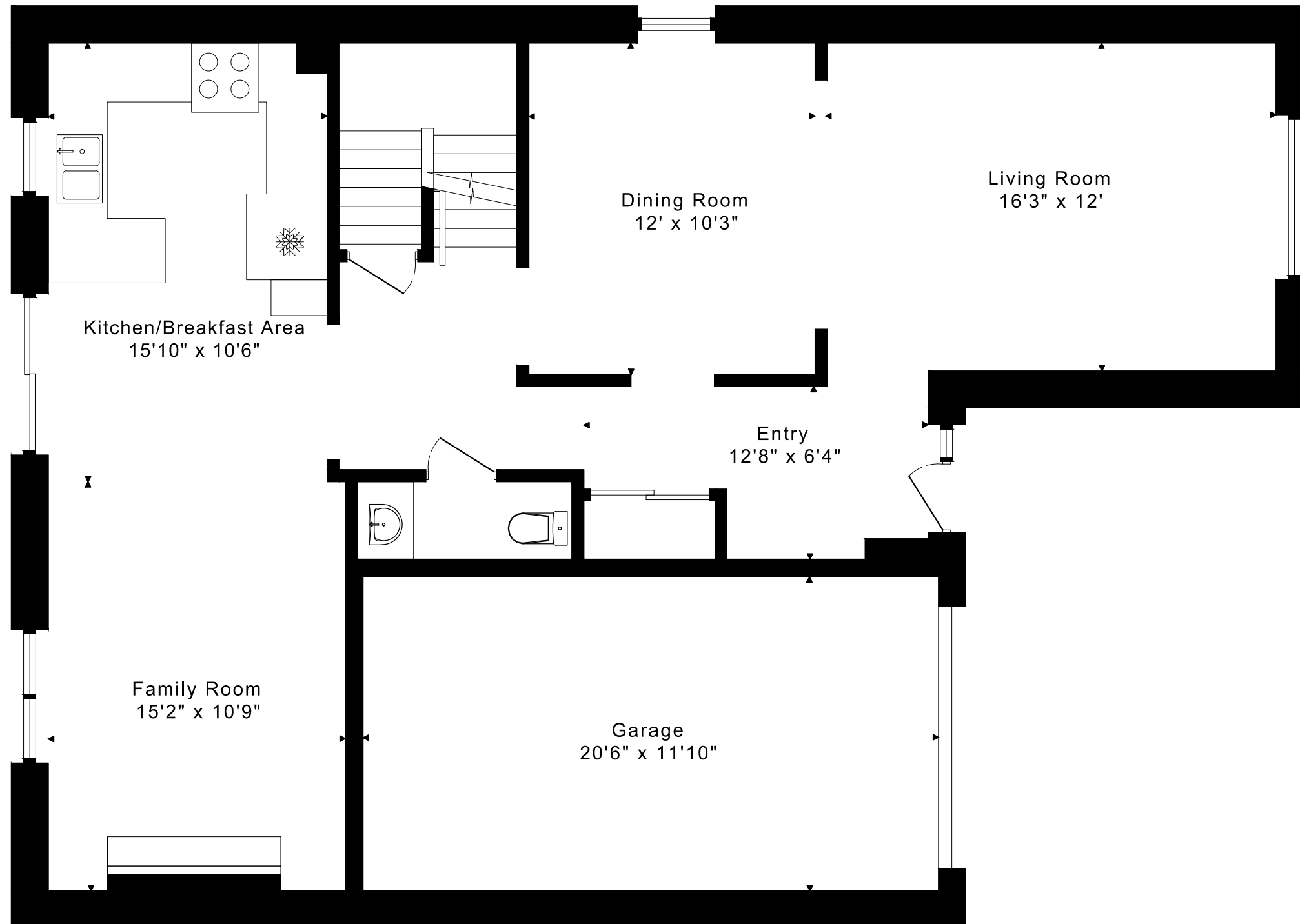
18 DERVORC CRESCENT  
FLOOR PLANS



2240 sq ft + 1080 sq ft  
BELOW GRADE

# 18 DERVORC CRESCENT FLOOR PLANS

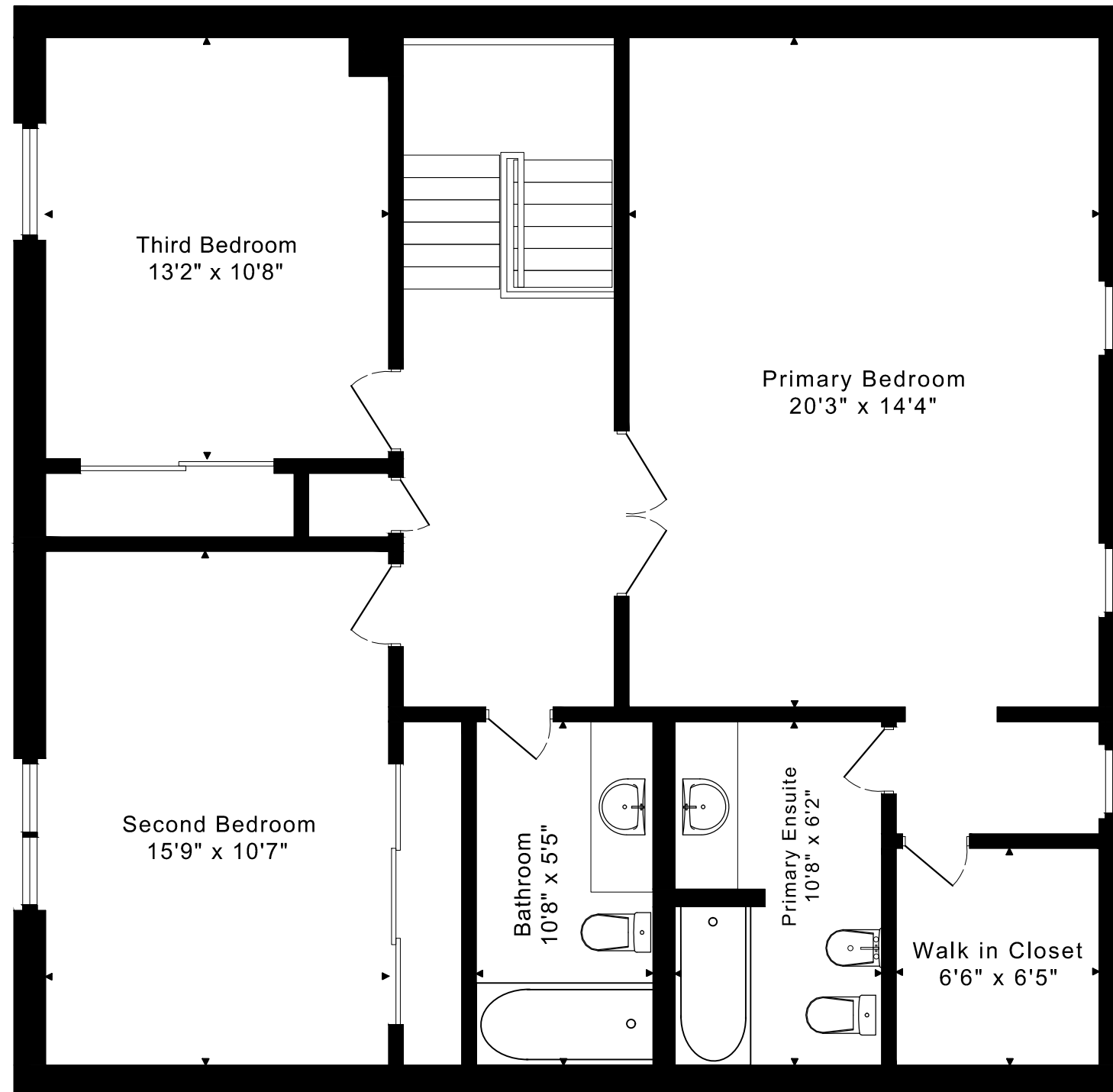
MAIN FLOOR 1080 SQUARE FEET



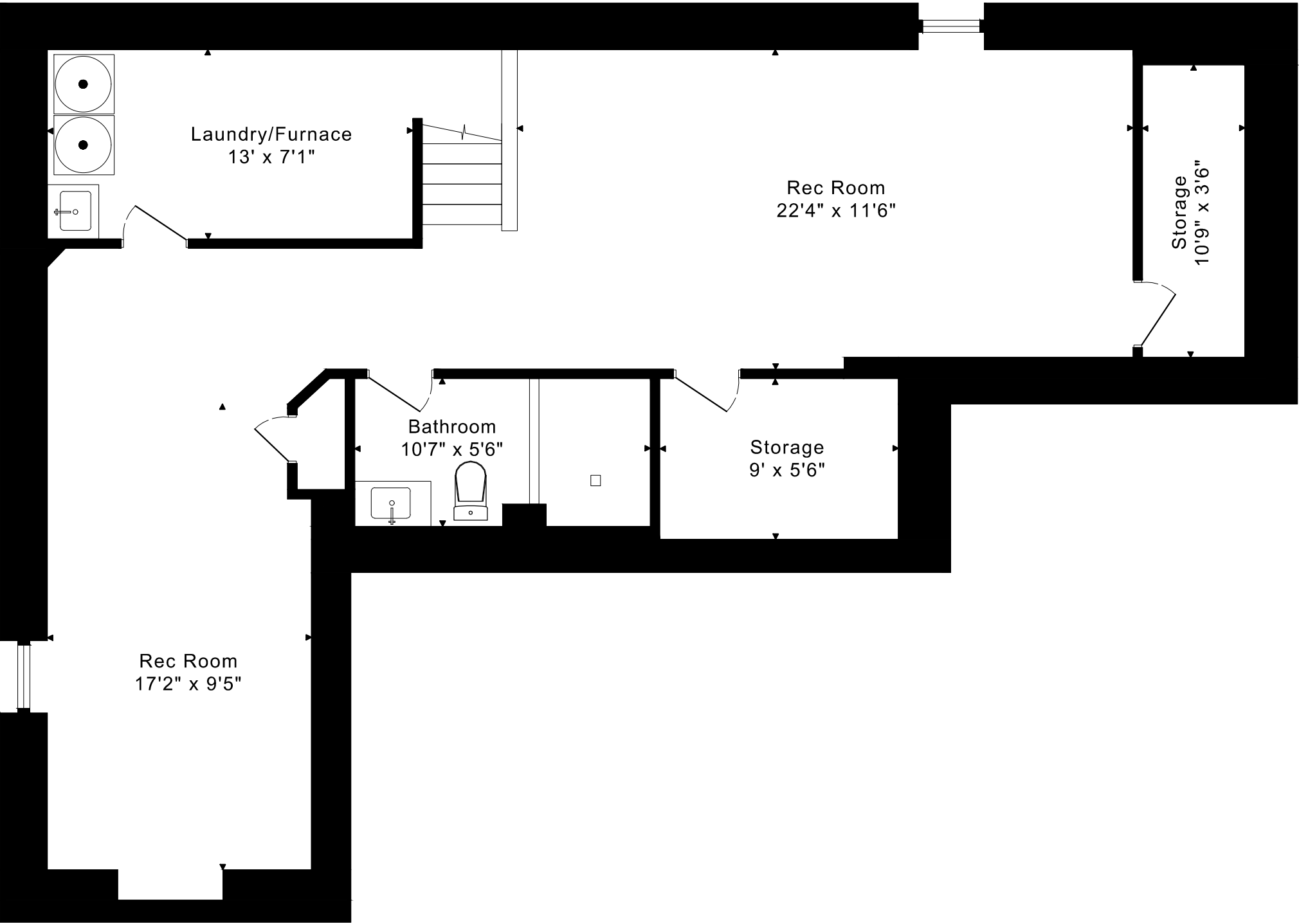
# 18 DERVORC CRESCENT

## FLOOR PLANS

SECOND FLOOR 1160 SQUARE FEET



18 DERVORC CRESCENT  
FLOOR PLANS  
LOWER FLOOR 1080 SQUARE FEET



18 DERVOCK CRESCENT ROOM MEASUREMENTS

Floor	Room	Imperial						Metric [m]		
		Length		Width		Height		Length	Width	Height
		Feet	Inches	Feet	Inches	Feet	Inches			
Second	Primary Bedroom	20	3	14	4	8	1	6,17	4,37	2,46
	Primary Ensuite	10	8	6	2	7	11	3,25	1,88	2,41
	Walk in Closet	6	6	6	5	8	1	1,98	1,96	2,46
	Second Bedroom	15	9	10	7	8	1	4,80	3,23	2,46
	Third Bedroom	13	2	10	8	8	1	4,01	3,25	2,46
	Bathroom	10	8	5	5	7	11	3,25	1,65	2,41
Main	Entry	12	8	6	4	8	0	3,86	1,93	2,44
	Living Room	16	3	12	0	8	0	4,95	3,66	2,44
	Dining Room	12	0	10	3	8	0	3,66	3,12	2,44
	Kitchen/Breakfast Area	15	10	10	6	8	0	4,83	3,20	2,44
	Family Room	15	2	10	9	8	0	4,62	3,28	2,44
	Garage	20	6	11	10	8	0	6,25	3,61	2,44
Lower	Rec Room	22	4	11	6	7	7	6,81	3,51	2,31
	Rec Room	17	2	9	5	7	7	5,23	2,87	2,31
	Laundry/Furnace	13	0	7	1	7	7	3,96	2,16	2,31
	Storage	10	9	3	6	7	7	3,28	1,07	2,31
	Storage	9	0	5	6	7	7	2,74	1,68	2,31
	Bathroom	10	7	5	6	6	9	3,23	1,68	2,06

The following is a disclaimer regarding the approximate nature of dimensions and floor areas listed in this document:

---

**Disclaimer:**

The dimensions and floor areas listed in this document are provided as an estimate only and are intended to be used for illustration purposes only. These measurements are not necessarily meant to be a perfect representation of the actual space.

**Notes regarding measurement methods and accuracy:**

The utilization of laser measurement technology during the 3D model capturing process at the location provides an accurate representation of floor plans, with a typical margin of error of 3-5%. For the most accurate and official measurement data, it is advised to consult official documents such as MPAC records, builder's pre-construction plans, or data from certified measurement companies.

Exterior wall thickness is included in the calculation of the overall square footage and is considered as a component of the footprint. The wall thickness measurement is obtained onsite whenever possible, or estimated in the event where obtaining onsite measurements is not possible, such as in the case of condominium buildings where wall thickness may vary throughout the building.